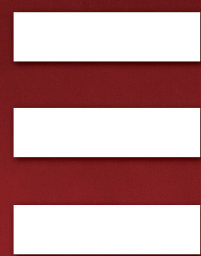




Hakken



Designed in Japan

SPEED TO BURN RED

CORE DRILL WITH AUTOFEED

WALL SAW

WIRE SAW

DRY SYSTEMS FOR DRILLING AND SAWING

CONSEC CORPORATION

CONSEC CORPORATION, established in 1967, is Japanese leading manufacturer of machines and tools for concrete coring, wall sawing and wire sawing. Our products are accumulated so much technical know-how for half a century. In addition, we have contractor department in house and feedback the product reliability and demand from the user point of view in order to endlessly improve the machine and find the new innovative idea.

Our mission is to contribute prosperity of society by creating innovative product and brand-new technology in the building and civil engineering market heeding safety and environment.

Company Profile

Main Business:

- ▶ Manufacture and sale of drilling and sawing equipment
- ▶ Manufacture and sale of diamond cutting tool
- ▶ Contractor of drilling and sawing
- ▶ Sales of construction machinery
- ▶ Housing and living-related equipment sales OA equipment
- ▶ Facility Rental Property
- ▶ Life insurance, life insurance agency business
- ▶ Business IT (Systems Support Outsourcing)

Capital: 36 million US\$

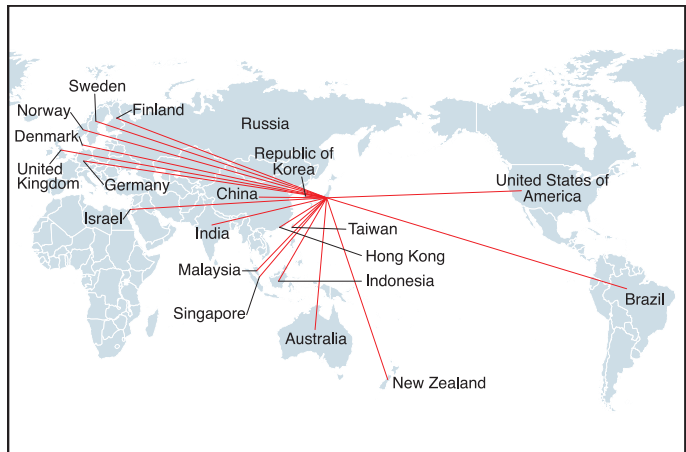
Annual turnover: 74 million US\$

Registered shares: November 28, 1990 (1990) <JASDAQ>

Number of Employees: 222

Home page: www.consec.co.jp

Sales network:



Address:

Headquarter

4-6-8 Shoko Center, Nishi-ku, Hiroshima, Japan 733-0833

TEL: +81-82-277-5451 FAX: +81-82-278-6389

International Trading Department

1-7-5-1, Sakaimachi, Naka-ku, Hiroshima, Japan 730-0853

TEL: +81-82-297-3231 FAX: +81-82-297-3230

Development Department and Hiroshima Plant

552-1 Umenokida, Kamikofukawa, Itsukaiti-cho, Saeki-ku, Hiroshima, Japan 731-5104

TEL: +81-82-927-1877 FAX: +81-82-927-3826

29 sales branches in Japan



Strength of our company is that contractor and R&D department work together.
It makes possible to implement difficult challenge.



Dam project
4mX4m tunnel opening



Stitch drill for 20m long.
The drilling accuracy is ± 2 cm from starting point to the end.



Wire saw



Wall Cutter



Super light weight and compact Drill Head

SPJ-122 Series

Maximum
120
mm

Features

- Single Speed motor
- High performance and toughness new motor.
- Water Supply Cock with urethane hose.
Water Supply Cock can be positioned at left and right side of drill carriage.
- Gear box with a built in torque limiter
- Circuit protector for over load protection.
- One-touch handle
Handle is easy to change left and right side on carriage without tool.
- Drilling by the wall is possible for the smallest dia $\phi 65$.



Pole Base, Core Bit and Water collector not included except SPJ-122Ct.

Drill Head Specification

Model Name		SPJ-122Hi	SPJ-122Ax	SPJ-122He-U	SPJ-122Ct
Power Source		230V		110V	
Rated Current		6.1A		14A	
Maximum Output		1,500W			
No-load speed		950min ⁻¹			
Maximum bit diameter		120mm			
Spindle thread		G1/2"	A-rod	G1/2" + 1-1/4"-7UNC	C-rod
Size	W	177mm			
	L	252mm			
	H	283mm	307mm	316mm	283mm
Weight		5.0kg			4.9kg
Safety Certification		CE	-	CE	-
Drill Carriage Assy.		Included			
Pole Base		Not Included, SB-401 and AB-401 series can be combined.			SB-401-580 Included

The specifications and appearances are subject to change without prior notice.

Light weight and compact, 2 speed Drill Head

SPF-181 Series

Maximum
180
mm

Features

- 2 speed motor
- Maximum Output 2,100W
- Swiveling Water Supply Cock
Water Supply Cock can be positioned for necessary direction of water hose.
- Equipped with slipping clutch
Clutch torque can be easily adjusted at job site without disassembly of gear box.
- Circuit protector for over load protection
- Roller slide Drill Carriage Assy for cross-section 49x49 mm.
Smooth feeding and precise drilling is possible.
- One-touch handle
Handle is easy to change left and right side on carriage without tool.
- Automatic Feeding System can be used by remodeling



Pole Base, Core Bit and Water collector not included.

Drill Head Specification		
Model Name		SPF-181Uh2i
Power Source		230V
Rated Current		7.3A
Maximum Output		2,100W
No-load speed		700min ⁻¹ / 1,250min ⁻¹
Maximum bit diameter		180mm
Spindle thread		G1/2" + 1-1/4"-7UNC
Size	W	212mm
	L	327mm
	H	423mm
Weight		10.2kg
Safety Certification		CE
Drill Carriage Assy.		Included
Pole Base		Not Included, SB-491 and AB-491 series can be combined.

The specifications and appearances are subject to change without prior notice.

Middle class single speed Drill Head for professional

SPN-202 Series

Maximum
205
mm

Features

- Single speed motor
- Maximum Output 2,400W
- Swiveling Water Supply Cock
Water Supply Cock can be positioned for necessary direction of water hose.
- Equipped with slipping clutch
Clutch torque can be easily adjusted at job site without disassembly of gear box.
- Circuit protector for over load protection
- Roller slide Drill Carriage Assy for cross-section 49x49 mm.
Smooth feeding and precise drilling is possible.
- One-touch handle
Spring-loaded self centering handle is easy to change left and right side on carriage without tool.
- Automatic Feeding System can be used by remodeling



Pole Base, Core Bit and Water collector not included.

Drill Head Specification

Model Name		SPN-202Ui	SPN-202Uw	SPN-202At
Power Source		230V	120V	110V
Rated Current		8.7A	15A	15A
Maximum Output		2,400W		
No-load speed		710min ⁻¹	700min ⁻¹	760min ⁻¹
Maximum bit diameter		205mm (8")		
Spindle thread		G1/2"+ 1-1/4"-7UNC		A-rod
Size	W	247mm		
	L	328mm		
	H	419mm		413mm
Weight		11.3kg	11.0kg	10.8kg
Safety Certification		CE	-	-
Drill Carriage Assy.		Included		
Pole Base		Not Included, SB-491 and AB-491 series can be combined.		

The specifications and appearances are subject to change without prior notice.

Middle class 2 speed Drill Head for professional

SPZ-252 Series

Maximum
254
mm

Features

- 2 speed motor
- Maximum Output 2,400W
- Swiveling Water Supply Cock
Water Supply Cock can be positioned for necessary direction of water hose.
- Equipped with slipping clutch
Clutch torque can be easily adjusted at job site without disassembly of gear box.
- Circuit protector for over load protection
- Roller slide Drill Carriage Assy for cross section 49x49 mm
Smooth feeding and precise drilling is possible.
- One-touch handle
Spring-loaded self centering handle is easy to change left and right side on carriage without tool.
- Automatic Feeding System can be used by remodeling



Pole Base, Core Bit and Water collector not included.

Drill Head Specification

Model Name		SPZ-252U2i	SPZ-252U2w	SPZ-252A2t
Power Source		230V	120V	110V
Rated Current		8.7A	20A	20A
Maximum Output		2,400W		
No-load speed (LOW/HI)		490/1,150min ⁻¹	490/1,150min ⁻¹	520/1,200min ⁻¹
Maximum bit diameter		254mm (10")		
Spindle thread		G1/2"+ 1-1/4"-7UNC		A-rod
Size	W	257mm		
	L	353mm		
	H	452mm		446mm
Weight		13.6kg	12.4kg	
Safety Certification		CE	-	-
Drill Carriage Assy.		Included		
Pole Base		Not Included, SB-491 and AB-491 series can be combined.		

The specifications and appearances are subject to change without prior notice.

Middle class 2 speed Drill Head for professional

SPM-302 Series

Maximum
305
mm

Features

- 2 speed motor
- Maximum Output 2,400W
- Swiveling Water Supply Cock
Water Supply Cock can be positioned for necessary direction of water hose.
- Equipped with slipping clutch
Clutch torque can be easily adjusted at job site without disassembly of gear box.
- Circuit protector for over load protection
- One-touch handle
Spring-loaded self centering handle is easy to change left and right side on carriage without tool.
- Automatic Feeding System can be used by remodeling



Pole Base, Drill Carriage, Core Bit and Water collector not included.

Drill Motor Specification				
Model Name		SPM-302U2i	SPM-302U2w	SPM-302U2e
Power Source		230V	120V	110V
Rated Current		8.7A	20A	18.2A
Maximum Output		2,400W		
No-load speed (LOW/HI)		370/880min ⁻¹	400/950min ⁻¹	390/920min ⁻¹
Maximum bit diameter		305mm (12")		
Spindle thread		G1/2"+ 1-1/4"-7UNC		
Size	W	148mm		
	L	182mm	179mm	
	H	452mm	456mm	452mm
Weight		11.2kg	10.5kg	10.5kg
Safety Certification		CE	-	CE
Drill Carriage Assy.		Not included, CL-593 and CL-593E can be combined.		
Pole Base		Not Included, SB-591 and AB-591 series can be combined.		

The specifications and appearances are subject to change without prior notice.

Powerful 2 speed Drill Motor for professional

SPO-14 Series

Maximum
355
mm

Features

- 2 speed motor
- Maximum Output 3,400W
- Swiveling Water Supply Cock
Water Supply Cock can be positioned for necessary direction of water hose.
- Equipped with slipping clutch
Clutch torque can be easily adjusted at job site without disassembly of gear box.
- Circuit protector for over load protection
- One-touch handle
Spring-loaded self centering handle is easy to change left and right side on carriage without tool.
- Automatic Feeding System can be used by remodeling



Pole Base, Drill Carriage, Special Spacer, Core Bit and Water collector not included.

Drill Head Specification				
Model Name		SPO-14Ax-A	SPO-14Ai-U	SPO-14Ae-U
Power Source		230V	230V	120V
Rated Current		10.4A	10.4A	20A
Maximum Output		3,400W		
No-load speed (LOW/HI)		300/700min ⁻¹		
Maximum bit diameter		355mm (14")		
Spindle thread		A-rod	1-1/4"-7UNC	
Size	W	148mm		
	L	198mm		
	H	487mm	496mm	
Weight		12.8kg	13.3kg	13.6kg
Spacer type		Special Spacer 59mm (Thickness 30mm)		
Spacer Quantity	10"	0 pc		
	12"	1 pcs		
	14"	2 pcs		
Safety Certification		-	CE	
Drill Carriage Assy.		Not included, CL-593 and CL-593E can be combined.		
Pole Base		Not Included, SB-591 and AB-591 series can be combined.		

The specifications and appearances are subject to change without prior notice.

Heavy-duty 3 speed Drill Motor for professional

SPX-16 Series

Maximum
406
mm

Features

- 3 speed motor
- Power requirement 3,300W
- Swiveling Water Supply Cock
Water Supply Cock can be positioned for necessary direction of water hose.
- Equipped with slipping clutch
Clutch torque can be easily adjusted at job site without disassembly of gear box.
- Circuit protector for over load protection
- One-touch handle
Spring-loaded self centering handle is easy to change left and right side on carriage without tool.
- Automatic Feeding System can be used by remodeling



Pole Base, Drill Carriage, Special Spacer, Core Bit and Water collector not included.

Drill Motor Specification

Model Name		SPX-16A3e-U	SPX-16A3x-A	SPX-16A3x-U
Power Source		115V	230V	230V
Rated Current		30A	15.8A	15.8A
Power requirement		3,300W		
No-load speed (LOW/MIDDLE/HI)		300/800/1,400min ⁻¹		
Maximum bit diameter		406mm (16")		
Spindle thread		1-1/4"-7UNC	A-rod	1-1/4"-7UNC
Size	W	151mm		
	L	196mm		
	H	509mm	501mm	509mm
Weight		16.1kg		
Spacer type		Special Spacer 74mm (Thickness 52mm)		
Spacer Quantity	10"	0 pc		
	12"	1 pc		
	14"	2 pcs		
	16"	3 pcs		
Safety Certification		-		
Drill Carriage Assy.		Not included, CL-593 and CL-593E can be combined.		
Pole Base		Not Included, SB-591 and AB-591 series can be combined.		

The specifications and appearances are subject to change without prior notice.

Heavy-duty 2 speed Drill Motor for professional

SPX-24 Series

Maximum
600
mm

Features

- 2 speed motor
- Power requirement 3,300W
- Swiveling Water Supply Cock
Water Supply Cock can be positioned for necessary direction of water hose.
- Equipped with slipping clutch
Clutch torque can be easily adjusted at job site without disassembly of gear box.
- Circuit protector for over load protection
- One-touch handle
Spring-loaded self centering handle is easy to change left and right side on carriage without tool.
- Automatic Feeding System can be used by remodeling.



Pole Base, Drill Carriage, Special Spacer, Core Bit and Water collector not included.

Drill Motor Specification				
Model Name		SPX-24Ae-U	SPX-24Ax-A	SPX-24Ax-U
Power Source		115V	230V	
Rated Current		30A	15.8A	
Power requirement		3,300W		
No-load speed (LOW/HI)		100/200min ⁻¹		
Maximum bit diameter		600mm (24")		
Spindle thread		1-1/4"-7UNC	A-rod	1-1/4"-7UNC
Size	W	187mm		
	L	225mm		
	H	508mm	496mm	508mm
Weight		20,0kg	19,8kg	
Spacer type		Special Spacer 74mm (Thickness 52mm)		
Spacer Quantity	14"	0 pc		
	18"	1 pcs		
	24"	2 pcs		
Safety Certification		-		
Drill Carriage Assy.		Not included, CL-743 and CL-743E can be combined.		
Pole Base		Not Included. SB-741 and RB-741 series can be combined.		

The specifications and appearances are subject to change without prior notice.

Automatic feeding system “EHAC”

Features

- Automatic Feeding System for Core Drill
Artistic performance is installed in CPU circuit
- Easy to mount CONSEC drill carriage
- Drill Motor load current displayed touch panel and easy to change the setting load current value
- Integrated reinforced steel sensor function
It enables not to cut reinforcing steel in case of small diameter drilling targeting earthquake strengthening. After detecting reinforcing steel, core drill automatically stops using built-in “Reinforcing steel detection software”
- Automatic stop function
After complete drilling, feeding and drilling automatically stop.

EHAC-80 series



EHAC-130 series

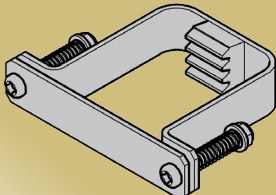
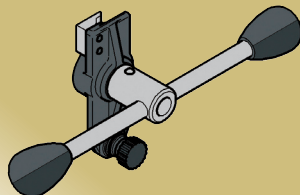


Pole Base, Drill Motor, Drill Carriage,
Core Bit not included.

Specification

		EHAC-80 series			EHAC-130 series	
Model Name		EHAC-80Ai	EHAC-80Aw	EHAC-80Ae	EHAC-130Ai	EHAC-130Aw
Power Supply (Single Phase)		AC 230V50Hz/60Hz	AC 110-120V50/60Hz		AC 230V50Hz/60Hz	AC 110-120V50/60Hz
Max. Power Consumption		52.8W			75W	
Feeding Gear		Single Speed			Two Speed	
Max. Feeding Speed	CL-49 series	About 105mm/min			Approx. 105(Lo)/197(Hi)mm/min ⁻¹	
	CL-59 series	About 77mm/min			Approx. 70(Lo)/131(Hi)mm/min ⁻¹	
	CL-74 series	N/A			Approx. 83(Lo)/155(Hi)mm/min ⁻¹	
Max. Motor Rated Current		15A	21A		16A	30A
Reverse mode		N/A			Yes	
Applicable Core Drills	Type	SPF Core Drill SPN Core Drill SPZ Core Drill SPM Core Drill SPO Core Drill			SPF Core Drill SPN Core Drill SPZ Core Drill SPM Core Drill SPO Core Drill SPX Core Drill	
Size W×L×H		195×166×275mm			247×189×279mm	
Weight (Including cord)		6.3kg	6.1kg	6.3kg	7.1kg	7.7kg
Safety Certification		CE	-	CE	CE	-

Options

Model Name	EHAC Stopper for 49x49 pole	EHAC Stopper for 59x59 pole	EHAC Right Handle
Weight	0.2kg	0.2kg	1.2kg
Picture			

Accessories

■ Pole Base

Standard Pole Base

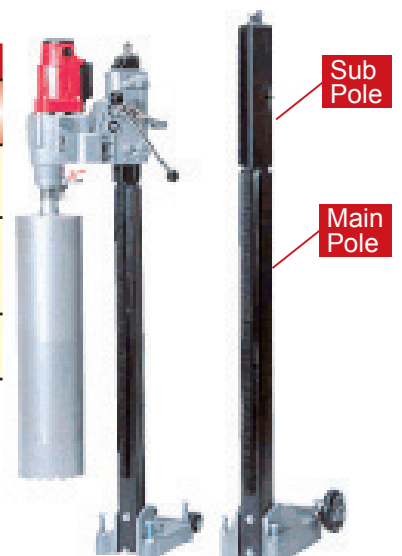
Model name	Applicable Drill Head	Pole cross-section(mm)	Pole height (mm)	Total travel (mm)
SB-401-700	SPJ	40x40	700	451
SB-491-810	SPF/SPN/SPZ	49x49	810	505
SB-491-1000			1,000	695
SB-594-800	SPM/SPO/SPX-14/SPX-16	59x59	800	424
SB-594-900			900	524
SB-594-1000			1,000	624
SB-741-1050	SPX-24	74x74	1,050	592

Water Collector Fitting included only SB-401 and SB-491 series



Swiveling Pole Base

Model name		Applicable Drill Head	Pole cross-section(mm)	Pole height (mm)	Total travel (mm)
Main Pole	SB-491-1035	SPF/SPN/SPZ	49x49	1,035	955
Sub Pole	RP-491			260	
Main Pole	SB-594-1035	SPM/SPO/SPX-14/SPX-16	59x59	1,035	964
Sub Pole	RP-591			340	
Main+ Sub Pole	RB-741-1085	SPX-24	74x74	1,448	966



Angle Adjustable Pole Base

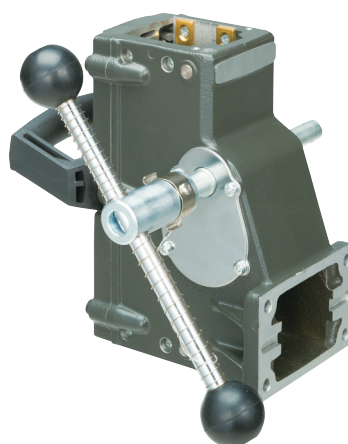
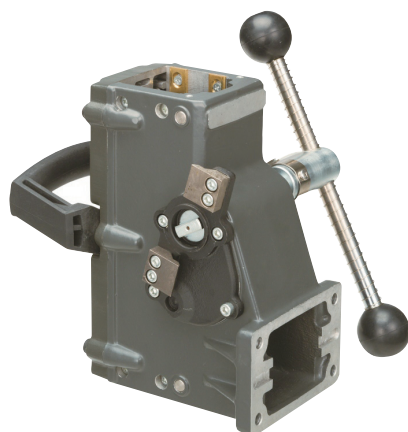
Model name	Applicable Drill Head	Pole cross-section(mm)	Pole height (mm)	Total travel (mm)
AB-401-700	SPJ	40x40	700	451
AB-491-1075	SPF/SPN/SPZ	49x49	1,075	695
AB-591-1085	SPM/SPO/SPX-14/SPX-16	59x59	1,085	624



Accessories

■ Drill Carriage Assy for SPM/SPO/SPX

Model name	Applicable Drill Head	Pole cross-section(mm)	Mount for Auto feed EHAC
CL-593	SPM/SPO/SPX-14/SPX-16	59x59	Not possible
CL-593E			Possible
CL-743	SPX-24	74x74	Not possible
CL-743E			Possible



■ Spacers for SPM/SPO/SPX

For Drill Carriage Assy CL-593 for **SPM/SPO/SPX**

Model: Special Spacer 59mm 1 pair
(Thickness 30mm)

Model: Special Spacer 59mm 2 pairs
(Thickness 60mm)

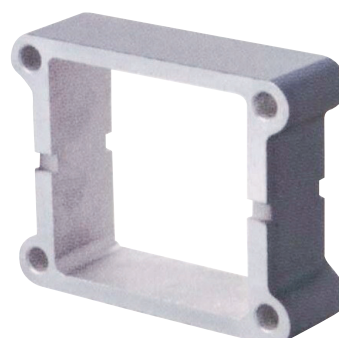
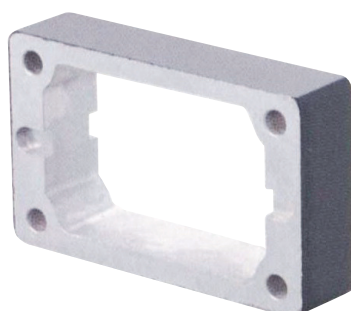
Model: Special Spacer 59mm 3 pairs
(Thickness 90mm)

For 74mm Drill Carriage Assy for **SPX24**

Model: Special Spacer 74mm 2 pairs
(Thickness 104mm)

Model: Special Spacer 74mm 4 pairs
(Thickness 208mm)

The spacer is mounted between the drill motor and the drill carriage for assembling bigger diameter of core bit.

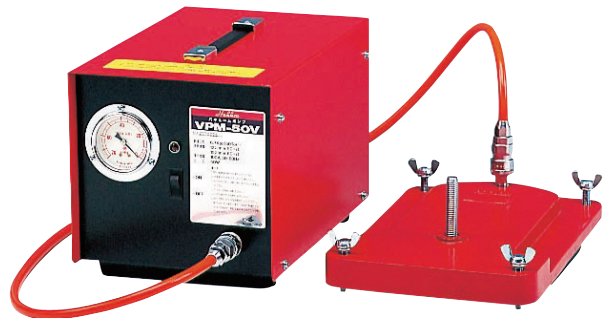


Accessories

Vacuum Pump and Vacuum Pad

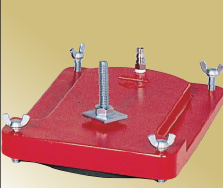
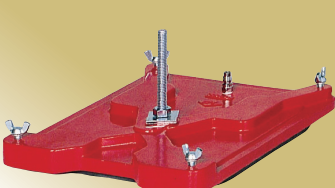
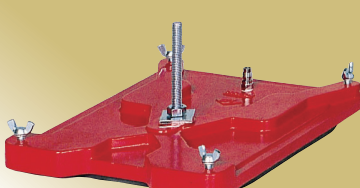
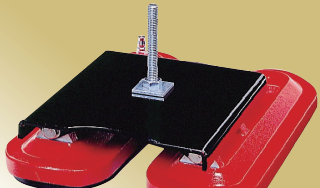
Possible to mount a Core Drill Machine without anchor bolt.

Model Name	VPM-50V Hiv
Power supply	Single phase 220V (110V) 50/60Hz
Max.output	40W
Pumping speed	12l/min (50Hz), 15l/min (60Hz)
Ultimate pressure	0.094MPa
Size (WxLxH)	220×340×230mm
Weight	12kg



Model Name	VP-300	VP-600	VP-700	VPH-20W
Applicable Pole Base	SB-401 series	SB-401,491 series AB-401,491 series	SB-401,491,594 series AB-401,491,591 series	
Application	Flat surface			Rounded surface φ234~Flat

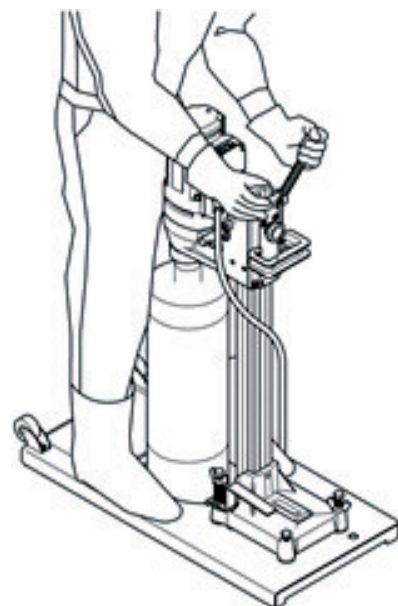
Vacuum Pad not included in Pump.

Model Name	VP-300	VP-600	VP-700	VPH-20W
Picture				

No Anchor Base

Possible to mount a Core Drill Machine without anchor bolt.
Fix the Pole Base by body weight as below figure.

Model Name	NA-63
Applicable Pole Base	SB-401,491 series



Accessories

Water Collector

Prevent from splashing drilling water.

Model Name	Max. Core Bit diameter (mm)
MS-2	φ58 (φ70, φ82)
MS-3	φ83 (φ95, φ115)
MS-4	φ130
MS-6	φ180
MS-8	φ230
MS-10	φ266
MS-12	φ326
MS-14	φ380
MS-16	φ435
MS-18	φ490
MS-20	φ545

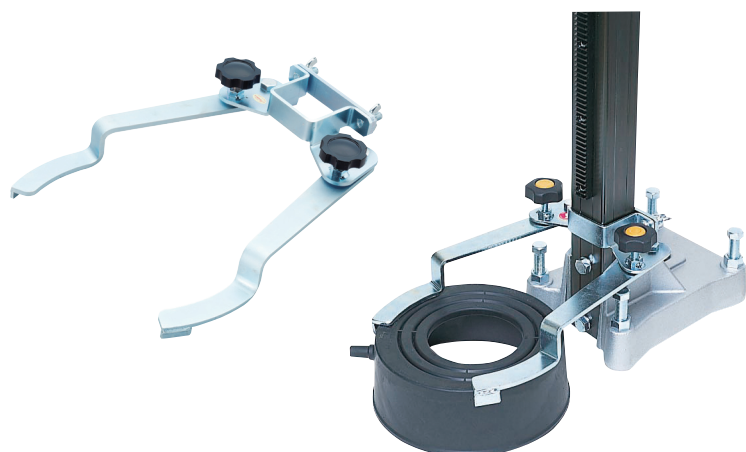
MS-2/MS-3 can be cut along groove for 3 kinds of inner dia.



Water Collector Fitting

Holding Water Collector proper position

Model Name	Applicable Pole Base	Remarks
MA-46	SB-401 series	-
MK-49	SB-491 series	-
MK-59		-
MK-59-1	SB-594 series	For using special spacer 1 pair
MK-59-3		For using special spacer 3 pairs
MK-74-0		-
MK-74-1	SB-741 series	For using special spacer 1 pair
MA-74-2		For using special spacer 2 pairs
MA-74-4		For using special spacer 4 pairs



Water Tank

Use for the work place where supplying water is inconvenience.
Supply water by air pressure even high place.

Model name: T-13A
Tank capacity: 13 litter

Model name: T-7A
Tank capacity: 7 litter



Accessories

■ Adapter

Use for changing spindle thread

Model name
Adapter A Thread→Unify 1_1/4 Thread
Adapter Unify 1_1/4 Thread→A Thread



■ Extension Rod

Deeper hole can be drilled adding Extension Rod

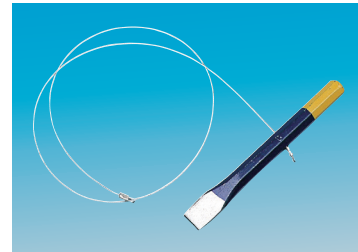
Model name	Size
Extension Rod 100L	φ41×Length 100mm
Extension Rod 150L	φ41×Length 150mm
Extension Rod 300L	φ41×Length 300mm
Extension Rod 500L	φ41×Length 500mm

(A Rod Screw)

■ Core Extracting wire

Use for taking out concrete core

Model name
Core Extracting Wire



■ Carrying Case

Use for SPJ series

Possible to storage with "AB-401-700"

Model name	Size
carrying Case FC	220×680×490mm



■ Fence Fixed Attachment

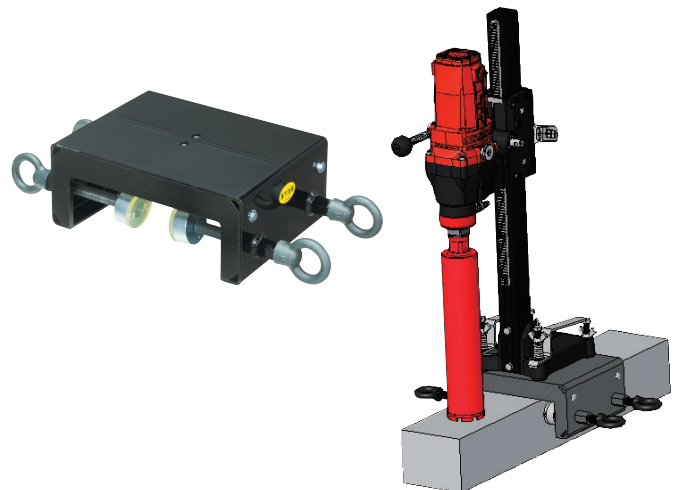
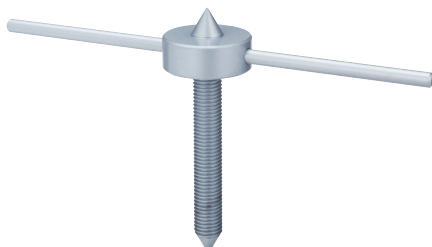
Use drilling hole for fence pole

Model name	FA-230
Applicable Drill	SPJ・SPF・SPN・SPZ series (CL-493)
Clamping range	70~230mm
Size (WxLxH)	220×300×120mm
Weight	10.6kg

■ Support Jack

Use for fix Pole Base with ceiling

Model name	Applicable Pole Base
Support Jack M16	SB-491, SB-594 series
Support Jack M24	SB-741 series



Wet and Dry Core Bit

Wet Bit "SV Series For A Rod"

Developed for middle class Drill Head



Model name	
Only for wet	
SVΦ27x350 or 420L	SVΦ130x350 or 420L
SVΦ32x350 or 420L	SVΦ150x350L
SVΦ40x350 or 420L	SVΦ160x350 or 420L
SVΦ52x350 or 420L	SVΦ180x350 or 420L
SVΦ56x350L	SVΦ200x350 or 420L
SVΦ65x350 or 420L	SVΦ204x350 or 420L
SVΦ70x350L	SVΦ210x350 or 420L
SVΦ75x350 or 420L	SVΦ230x350 or 420L
SVΦ80x350 or 420L	SVΦ250x350 or 420L
SVΦ90x350 or 420L	SVΦ254x350L
SVΦ106x350	SVΦ260x350 or 420L
SVΦ100x350 or 420L	SVΦ304x350L
SVΦ110x350 or 420L	SVΦ310x350 or 420L
SVΦ120x350L	SVΦ355x350L

Wet and Dry Bit for Drill Head SPJ

Developed for light class Drill Head

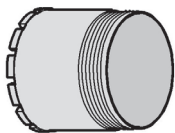
Model name	
For Wet	For Dry
Smart One φ14.5x260L	Dry One φ27x260L
Smart One φ15x260L	Dry One φ32x260L
Smart One φ19x260L	Dry One φ40x260L
Smart One φ22x260L	Dry One φ52x260L
Smart One φ25x260L	Dry One φ56x260L
Smart One φ27x260L	Dry One φ65x260L
Smart One φ32x260L	Dry One φ70x260L
Smart One φ40x260L	Dry One φ75x260L
Smart One φ52x260L	Dry One φ80x260L
Smart One φ56x260L	Dry One φ90x260L
Smart One φ65x260L	Dry One φ100x260L
Smart One φ70x260L	Dry One φ106x260L
Smart One φ75x260L	Dry One φ110x260L
Smart One φ80x260L	Dry One φ120x260L
Smart One φ90x260L	
Smart One φ100x260L	
Smart One φ106x260L	
Smart One φ110x260L	
Smart One φ120x260L	
Smart One φ130x260L	
Smart One φ150x260L	
Smart One φ160x260L	
Smart One φ180x260L	
Smart One φ200x260L	



* "Dry Swivel" is necessary to use Dry Bit.

Three Separated Wet and Dry Bit

Bit



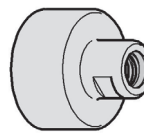
Model name	
Outer diameter (inch)	Effective length (mm)
1"	30
1 1/4"	35
1 1/2"	
2"	
2 1/2"	40
3"	
3 1/2"	
4"	70
5"	90
6"	
7"	
8"	
9"	
10"	
12"	
14"	

Tube



Model name	
Outer diameter (inch)	Effective length (mm)
1"	280 or 330
1 1/4"	
1 1/2"	
2"	270 or 320
2 1/2"	
3"	
3 1/2"	
4"	
5"	
6"	
7"	
8"	270
9"	
10"	
12"	
14"	

Coupling



Model name	
Outer diameter (inch)	Effective length (mm)
1"	0
1 1/4"	
1 1/2"	
2"	
2 1/2"	
3"	40
3 1/2"	
4"	
5"	
6"	
7"	
8"	
9"	
10"	
12"	
14"	



Assembled Drill Bit		
Outer diameter (inch)	Overall Drilling length (mm)	Overall length (mm)
1"	310 or 360	410 or 460
1 1/4"	315 or 365	415 or 465
1 1/2"	305 or 355	405 or 455
2"	345 or 395	
2 1/2"	350 or 400	410 or 460
3"		
3 1/2"		
4"	380 or 430	440 or 490
5"	400 or 450	460 or 510
6"		
7"		
8"		
9"	400	460
10"		
12"		
14"		

*Not available 14 inch for dry bit

* "Dry Swivel" is necessary to use Dry Bit.

We can make any size of core bit that you require, please feel free to contact us.

Dry Swivel

Model name
Dry swivel Unify to A rod

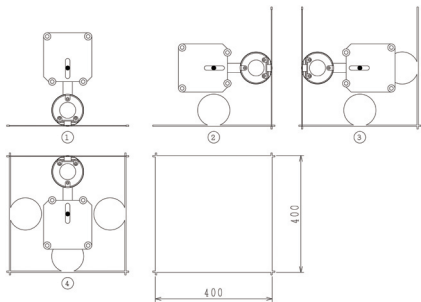
Attach this dry swivel between Drill motor and Dry Bit. Makes it possible to drill reinforced concrete without water. Concrete dust vacuumed up from inside of the dry swivel.



Unique opening without overcutting

Plunge Cutter PC-16

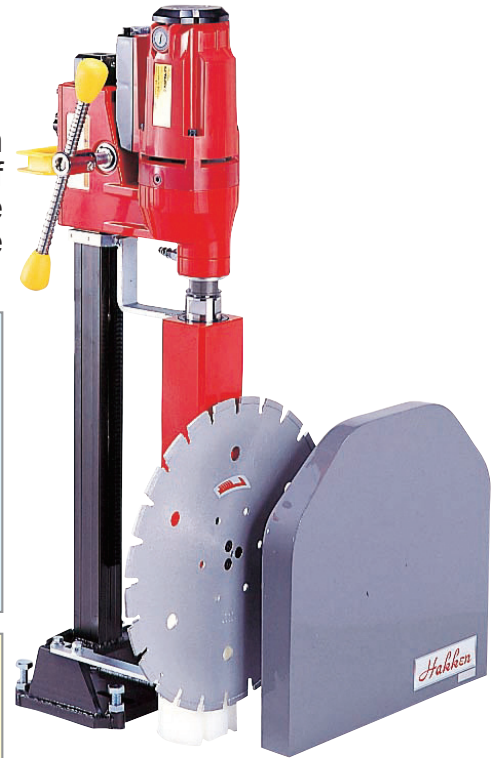
Unlike Wall Cutter which does not allow cutting deeper than the radius of diamond blade, plunge cutter enables cutting of thick reinforced concrete deeper than the diameter of blade by plunging its rotation axis into pilot hole which has to be drilled before plunging.



Opening procedure

1. Make four pieces of pilot holes
2. Change the Core Bit to Main Body of Plunge Cut PC-16.
3. Cut 4 sides along with pilot hole.

- Can be opened □350mm~□400mm quadrilateral hole only one anchor bolt and four pilot hole.
- The Plunge Cutter consists of three units, Main body, Pole Base and Cover.
- Diamond blade, Drill Head and 4" Core bit are required for execution.



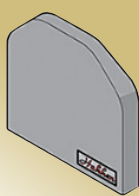



This is complete unit for Plunge Cutter including accessories

Specification

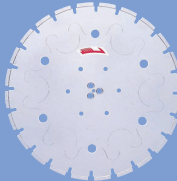
Applicable Drill head	SPN series
Max. cutting depth	282mm
Max. blade diameter	16"
Pilot hole	4" (110mm)

Options

Model Name	Main Body of Plunge Cut PC-16	49x49 Pole Base for Plunge Cut	Plunge Cut Cover 16"	Adapter Unify 1_1/4 Thread→A Thread
Picture				

* Drill Head SPN series is necessary

Cutting Blade

Model Name	Outer diameter	Picture
Blade for PC-16 8"	218mm	
Blade for PC-16 10"	268mm	
Blade for PC-16 12"	318mm	
Low Noise Blade for PC-16 14"	368mm	
Low Noise Blade for PC-16 16"	418mm	

Wire Saw

DSM-101A

Features



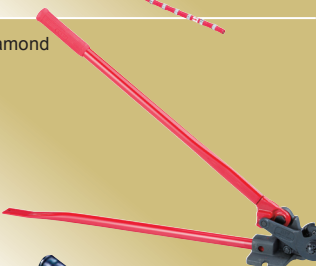
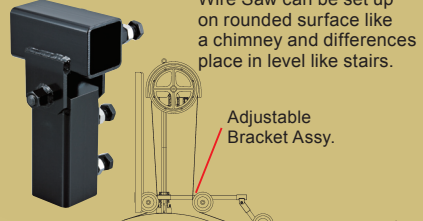
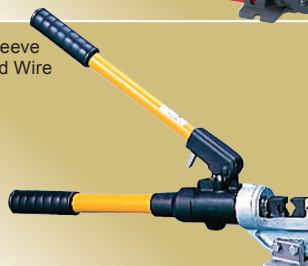
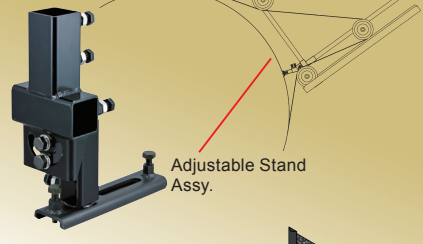

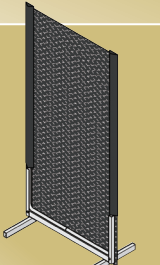
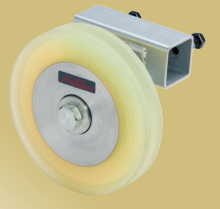
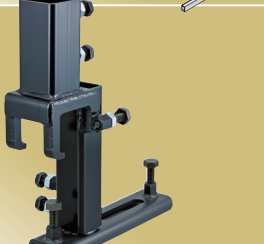
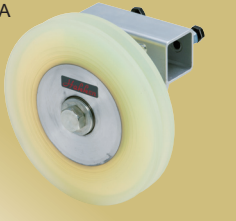



- Compact hydraulic Wire Saw
- Integrated electric torque converter
Feeding system for traveling drive pulley is integrated electric torque converter. Don't need to adjust wire tension frequently. In addition, it makes possible to extend long diamond wire life because the response is quick to applied load on the diamond wire.
- Powerful wire saw
Combination with Hydraulic Unit E-2002Ax, powerful wire sawing is possible.
- Simple structure is flexible
Wire strage is easily added with using extra pole and pulleys,
- Dividable component
Heavy components can be divided so that easy to work at narrow area and high-place.
- Safety improved for unexpected main pulley falling down using with integrated centrifugal brake.
- CE is not certified



Specification		
Model Name		DSM-101A
Hydraulic Motor (For Main Pulley drive)	Rated Pressure	21MPa
	Max. discharge	54 litter/min
	Max. Rotation Speed	850min ⁻¹
Main Pulley	Outer diameter	600mm
	Travel length	1,250mm
	Max. tensile strength	1,786N
	Max. travel speed	1,634 mm/min
Diamond Wire storage		8.7m
Diamond Wire diameter		10-11mm
Applicable Hydraulic Unit		E-2002Ax, E-1114Ax
Size W x L x H		1,357 x 498 x 2,068mm
Total Weight (Excluded Control Box and cable)		133kg

Options for DRY WIRE SAW are available, please ask CONSEC sales representative.

Wire Saw Options

<p>Diamond Wire</p>	<p>3 types of Diamond Wire are available, long life, standard, fast cutting. Sleeve is used for connecting wire. Connecting direction is specified.</p> 	<p>Pole Base for Guide Pulley</p>	<p>Used with Guide Pulley for cutting wide object by one stroke.</p> 
<p>Wire Cutter</p>	<p>Dedicated Diamond Wire cutting.</p> 	<p>Adjustable Bracket Assy. 101A</p>	<p>Wire Saw can be set up on rounded surface like a chimney and differences place in level like stairs.</p> 
<p>Hand Hydraulic Caulker</p>	<p>For crimping sleeve on the Diamond Wire joint.</p> 	<p>Adjustable Stand Assy. 101A</p>	<p>Adjustable Stand Assy.</p> 
<p>Water Stop Packing</p>	<p>Possible to save cutting water with inserting in cut slit. Because water doesn't flow out and can keep the water around Diamond wire.</p> 	<p>Safety Net with Frame</p>	<p>To prevent fatal accident by breaking Diamond Wire, Safety Net is definitely used during operation.</p> 
<p>φ200 Resin Guide Pulley Assy. GX φ220 Resin Guide Pulley Assy. GX</p>	<p>Made of urethane resin and high wearresistant. Pulley diameter is 200mm and 220mm.</p> 	<p>Easy Attaching Sub Pole Bracket Assy. 101A</p>	<p>Easy to change Sub Pole position.</p> 
<p>φ250 Resin Guide Pulley Assy. GX</p>	<p>Same part as DSM-101A standard component. Pulley diameter is 250mm.</p> 	<p>Electromagnetic Brake Assy. 101A</p>	<p>Possible to replace centrifugal brake which integrated Feed Assy. with Electromagnetic Brake Assy.</p> 
<p>φ250 Easy Attaching Resin Guide Pulley Assy. GX</p>	<p>Same part as DSM-101A standard component. Easy to change pulley position.</p> 	<p>Easy Attaching Water Supply Hose Assy. 101A</p>	<p>Possible to mount on □ 50 Guide Bar, pipe of scaffold and fix by anchor.</p> 

Hydraulic Unit

Model Name: E-2002Ax

Features

- 20kW High power water-cooled motor integrated
- Light weight and compact size with using aluminum frame
- Oil cooler with high efficient heat exchange enables long time continuous use
- Water drain equipped for preventing freeze damage of water-cooled motor in the cold season
- Magnet equipped in hydraulic tank drain bolt in order to clean the iron powder mixed in hydraulic oil.
- 5/8" hydraulic hose 20m (Low pressure drop type) is standard accessory
- The machine is not certificated CE marking

Applications

- Compact Hydraulic Wire Saw DSM series
- Hydraulic Core Drill SPU series
- Hydraulic Wall Cutter CHW series



Model Name: E-1124Ax

Features

- 11kW low cost and easy maintenance model
- Accurate discharge amount can be set by labeled "Discharge amount and scale table"
- The pressure adjustment knob is equipped front side so that pressure adjustment is easy
- "Reversal prevention relay" is built in the power supply box so that reversal of the electric motor doesn't happen due to the wrong wiring
- The hour meter shows the time to do maintenance
- 5/8" hydraulic hose 20m (Low pressure drop type) is standard accessory
- The machine is not certificated CE marking

Applications

- Compact Hydraulic Wire Saw DSM series
- Hydraulic Core Drill SPU series
- Hydraulic Wall Cutter CHW series



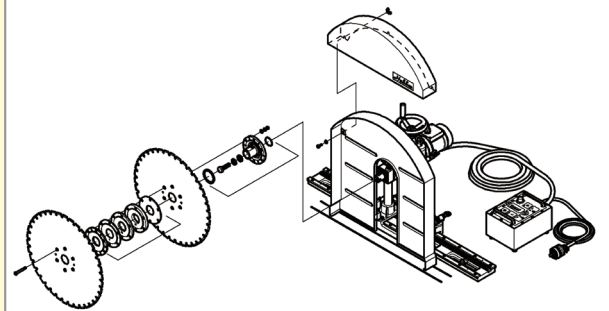
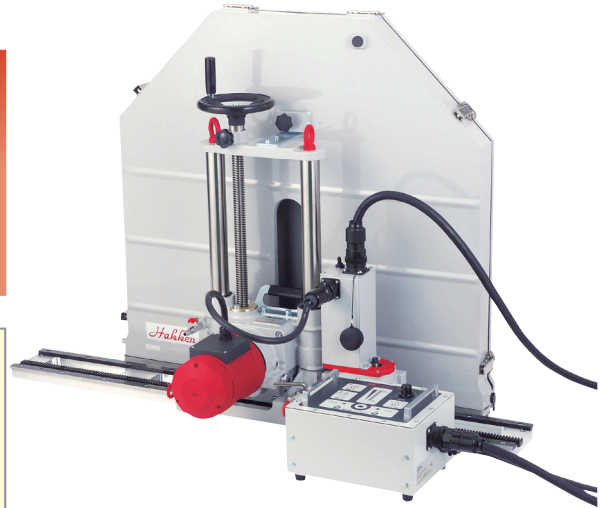
Specifications

Model Name			E-2002Ax		E-1124Ax	
Power supply			3-phase 400V 50/60Hz Commercial power source over 50A		3-phase 400V 50/60Hz Commercial power source over 25A	
Electric Motor			3-phase induction motor Water-cooled 20kw 2P		3-phase induction motor Water-cooled 11kw 4P	
Hydraulic Pump	Type		Variable capacity piston pump			
	Rated pressure		21MPa			
	The range of adjusting discharge amount	50Hz	23.5~47.9 litter/min		23.0~42.2 litter/min	
		60Hz	28.3~57.6 litter/min		27.7~50.7 litter/min	
	Coupling	Out	NITTO KOHKI Flat Face Cupla 1/2” Plug			
		In	NITTO KOHKI Flat Face Cupla 1/2” Socket			
Oil Tank Capacity			20ℓ		57ℓ	
Size W×L×H			680×943×943~1,242mm		670×1,090×874mm	
Weight (Excluded Code)			212kg		340kg	
Standard Accessories			Hydraulic Hose 5/8” Assy. FF Plug and Socket 20m (2) Single-ended Spanner 13mm (1) Instruction Manual (1)		Hydraulic Hose 5/8” Assy. FF Plug and Socket 20m (2) Single-ended Spanner 13mm (1) Instruction Manual (1) Hex. Bar wrench 2mm(1)	

Wall Cutter CDW-40AE

Features

- Single phase 3,300W heavy-duty motor
- Automatic cutting with LED indicator
Cutting load can be easily adjusted by load-setting rotary knob. Motor load current automatically kept constant with adjusting cutting speed even cutting reinforcing steel. In case of overload, orange LED indicator illuminates.
- Equipped with slipping clutch
- Simple structure makes low maintenance cost
- Wall Cutter can be mounted at any position of track rail
- Effortless transportation
Light weight due to the base and motor part can be separated easily
- Rigid track rail
- Circuit protector for over load protection
- CE is not certified



Option: Double Line Cut Attachment

Specification

Model Name	CDW-40AEx	CDW-40AE
Power Supply	Single-phase 230V 50/60Hz	Single-phase 115V 50/60Hz
Rated Current	15.8A	30A
Power requirement	3,300W	
No-load Speed (Low/High)	340/840min-1	
Max. Blade Dia.	40" (1,016mm) step cut needed using small blade	
Blade Bore Dia.	35mm	
Max. Cutting Depth	428mm used 40"(1,016mm) blade	
Size W×L×H	484×460×753mm	
Weight (Excluding Cord)	36.5kg	

Remarks: Dry wall cutter accessories and hydraulic type is available

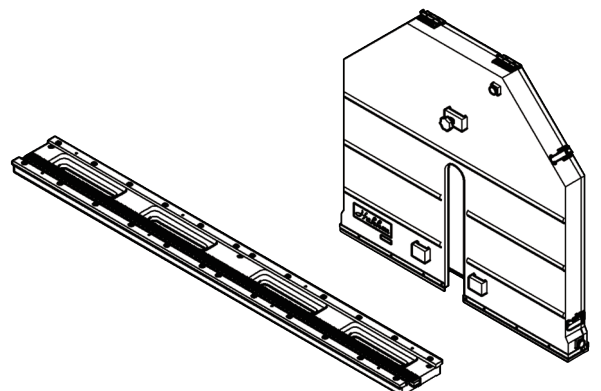
Options

Brade cover

Model Name	30A	40A	48A
Max. Blade Dia.	30"	40"	48"
Weight	9,7kg	13,5kg	18,0kg

Track rail

Model Name	600LA	1,200LA	1,800LA
Length	600mm	1,200mm	1,800mm
weight	6,3kg	12,5kg	18,8kg





CONSEC CORPORATION

International Trading Department

1-7-5-1, Sakaimachi, Naka-ku, Hiroshima, Japan 730-0853

TEL: +81-82-297-3231 FAX: +81-82-297-3230

www.consec.co.jp masanori_hiraga@consec.co.jp

